

Anatomy dr luay final 2016

بِسْمِ اللَّهِ الرَّحْمَنِ الرَّحِيمِ



Al-Azhar University - Gaza
Faculty of Pharmacy
Human Anatomy

كلية الصيدلة
المستوى الأول

الزمن : ساعتان

مدرس المادة :- الدكتور / لؤي محمد ناصر

اسم الطالبة (ثلاثي)
Final Exam 2015 / 2016

ملاحظة : الرجاء عدم الكتابة بالقلم الرصاص او القلم الاحمر و الامتحان يحتوي على 7 صفحات

QUESTION I MATCH

No	I	II	
1-	Atlas	Ductus (vas) deferens	
2-	Sella turcica	Ovary	
3-	Cranial nerve VII	Facial bone	
4-	Organ that produces eggs	Pituitary gland	
5-	Zygomatic	Thorax	
6-	Duct connecting epididymis to ejaculatory duct	First Cervical Vertebra	
7-	Cranial nerve V	Facial	
8-	Gland that hangs from the hypothalamus	Sphenoid bone	
9-	Humerus	Arm	
10-	Sternum	Trigeminal	

QUESTION II TRUE OR FALSE :

ملاحظة توضع الاجابات في المربع المحدد لها في نهاية سوال الصح و الخطاء

1. An afferent sensory neuron carries stimuli from the central nervous system to the effector.
2. The Hypoglossal nerve is the only cranial nerve pair that contains sensory fibers.
3. The collection of spinal nerves at the inferior end of the spinal cord is called the cauda equina.
4. There are 31 pairs of cranial nerves and 12 pairs of spinal nerves.
5. Cranial nerve X is the accessory nerve that controls tongue movement.
6. The innermost layer of the uterus is called the myometrium.
7. Villi are projections of the mucosa of the stomach.
8. There are only three paranasal sinuses located in the frontal, sphenoid, and parietal bones.
9. The larynx serves as a passageway for both food and air.
10. The bronchioles are the smallest of the conducting passageways in the lungs.
11. The Scapula is Short Bone
12. Systole means contraction of the ventricles.
13. The portion of the aorta in the abdominopelvic cavity is known as the thoracic aorta.
14. The superior and inferior mesenteric arteries branches from abdominal aorta .
15. The pulmonary arteries carry deoxygenated blood to the lungs.
16. The ascending colon is found on the left side of the abdominal cavity.

17. Another name for the alimentary canal is the gastrointestinal (GI) tract.
 18. The small intestine runs from the pyloric sphincter to the ileocecal valve.
 19. The first portion of the small intestine is the jejunum.
 20. The internal urethral sphincter is involuntary.

1	2	3	4	5	6	7	8	9	10	11	12	13	14	15	16	17	18	19	20	

QUESTION III Please Choose The Correct Answer :

ملاحظة: توضع الاجابات في المربع المحدد لها في نهاية سؤال اختر

1. The vital centers for the control of visceral activities such as heart rate, breathing, blood pressure, swallowing, and vomiting are located in the;

- A) Medulla oblongata
- B) Pons
- C) Cerebrum
- D) Midbrain

2. The sympathetic and parasympathetic nervous systems are subdivisions of the;

- A) Autonomic nervous system
- B) Voluntary nervous system
- C) Somatic nervous system
- D) Central nervous system

3. Afferent nerves are called _____, and motor nerves are called _____.

- A) Peripheral nerves; cranial nerves
- B) Sensory nerves; efferent nerves
- C) Cranial nerves; peripheral nerves
- D) Motor nerves; sensory nerves

4. The nerve that contains sensory fibers that are involved in hearing is;

- A) Cranial nerve VIII
- B) Cranial nerve II
- C) Cranial nerve IX
- D) Cranial nerve III

5. The peripheral nervous system consists of;

- A) The spinal and cranial nerves
- B) The brain and spinal cord
- C) Spinal nerves only
- D) Cranial nerves only

6. The term central nervous system refers to the;

- A) Spinal cord and spinal nerves
- B) Autonomic and peripheral nervous systems
- C) Brain, spinal cord, and cranial nerves
- D) Brain and spinal cord

7. Collections of nerve cell bodies inside the CNS are called;

- A) Nuclei
- B) Ganglia
- C) Nerves
- D) Tracts

8 The axis is the;

- A) Part of the sacrum
- B) Last lumbar vertebra
- C) Second cervical vertebra
- D) First cervical vertebra

2
A
B)
C)
D)
10
A)
B)
C)
D)
11.
A) I
B) V
C) C
D) C
12. J
the;
A) F
B) M
C) C
D) B
13. T
A) Er
B) Hy
C) Ep
D) My
14. Thi
A) Pr
3) Bul
2) Epi
2) Sen
5. Fer
A) Ute
B) Uter
2) Ova
2) Vagi
6. The
A) Body
B) Fund
C) Cervi
D) Vagiri
7. The r
A) The n
B) Both tl
C) The ha
D) Both tl
8. The te
A) Duode
B) Ileum
C) Jejunun
D) Pyloric

9. The pituitary gland is most closely associated with the:

- A) Hypothalamus
- B) Medulla oblongata
- C) Pineal gland
- D) Midbrain

10. The three major parts of the brain stem are the:

- A) Basal nuclei, pineal body, and choroid plexus
- B) Dura mater, arachnoid mater, and pia mater
- C) Midbrain, pons, and medulla oblongata
- D) Thalamus, epithalamus, and hypothalamus

11. The external female structure that corresponds to the male penis is the:

- A) Labia majora
- B) Vagina
- C) Cervix
- D) Clitoris

12. The superior rounded region of the uterus above the entrance of the uterine tubes is called the:

- A) Fundus
- B) Mons pubis
- C) Cervix
- D) Body

13. The inner mucosal layer of the uterus is called the:

- A) Endometrium
- B) Hypometrium
- C) Epimetrium
- D) Myometrium

14. Thick, clear mucus that cleanses the urethra of acidic urine is produced by the:

- A) Prostate
- B) Bulbourethral glands
- C) Epididymis
- D) Seminal vesicles

15. Fertilization usually occurs in the:

- A) Uterine (fallopian) tubes
- B) Uterus
- C) Ovary
- D) Vagina

16. The narrow outlet of the uterus that projects into the vagina is called the:

- A) Body
- B) Fundus
- C) Cervix
- D) Vagina

17. The nasal cavity is separated from the oral cavity by:

- A) The nasal conchae
- B) Both the hard and soft palate
- C) The hard palate
- D) Both the nasal conchae and hard palate

18. The terminal portion of the small intestine is known as the _____.

- A) Duodenum
- B) Ileum
- C) Jejunum
- D) Pyloric sphincter

19. What is the major artery that supplies the kidneys?

- A. Celiac axis
- B. Carotid
- C. Portal
- D. Renal

20. Which of the following is found in the urinary bladder?

- A. Urethra
- B. Ureter
- C. Nephron units
- D. Trigone

21. The renal pyramids are located in the:

- A) Renal cortex.
- B) Renal medulla.
- C) Renal capsule.
- D) Pelvis.

22. Urine is transported from the bladder to the outside of the body by the:

- A) Prostate gland
- B) Ureter
- C) Urethra
- D) Trigone

23. The tricuspid valve is located between the:

- A) Right ventricle and the pulmonary trunk
- B) Left ventricle and pulmonary artery
- C) Right atrium and right ventricle
- D) Right atrium and left atrium

24. The male gonads are called:

- A) The testes
- A) The ovaries
- C) The accessory sex glands
- D) The sperm ducts

25. The acrosome of sperm contains:

- A) Mitochondria
- B) Lysosomal enzymes
- C) Nuclear material
- D) All of the above

26. Which one of the following is the middle part of the small intestine:

- A) Ileum
- B) Descending colon
- C) Duodenum
- D) Jejunum

27. Which one of the following represents the correct order through which food passes in the alimentary canal:

- A) Mouth, pharynx, esophagus, stomach, large intestine, small intestine
- B) Pharynx, mouth, esophagus, stomach, large intestine, small intestine
- C) Mouth, pharynx, esophagus, small intestine, stomach, large intestine
- D) Mouth, pharynx, esophagus, stomach, small intestine, large intestine

28. Each kidney contains about:

- A) 100,000 nephrons
- B) 1 million nephrons
- C) 2 million nephrons
- D) 500,000 nephrons

29. The opening of the large intestine is called the:

- A) Cecum
- B) Sigmoid colon
- C) Anus
- D) Ileum

30. Lymph from the left arm would return to the heart through the:

- A) Thoracic duct
- B) Aorta
- C) Inferior vena cava
- D) Right lymphatic duct

31. Which of these arteries is NOT a branch of the abdominal aorta:

- A) Left common carotid artery
- B) Inferior mesenteric artery
- C) Common iliac arteries
- D) Renal arteries

32. The thick layer of the heart wall that contains contractile cardiac muscle tissue is the:

- A) VISCERAL PERICARDIUM
- B) PARIETAL PERICARDIUM
- C) MYOCARDIUM
- D) ENDOCARDIUM

33. What structure divides the left from the right ventricle:

- A) Tricuspid valve
- B) Interatrial septum
- C) Interventricular septum
- D) Bicuspid valve

34. The sinoatrial node is located in the:

- A) Right atrium
- B) Aorta
- C) Interventricular septum
- D) Left atrium

35. Which one of the following blood vessels carries oxygenated blood:

- A) Inferior vena cava
- B) Pulmonary vein
- C) Pulmonary artery
- D) Superior vena cava

36. The superior vena cava empties:

- A) Oxygenated blood into the left atrium
- B) Deoxygenated blood into the right ventricle
- C) Deoxygenated blood into the left atrium
- D) Oxygenated blood into the left ventricle

37. Which of the following blood vessels is a direct branch of the ascending aorta:

- A) Carotid artery
- B) Left brachiocephalic artery
- C) Right subclavian artery
- D) Both the right and left coronary arteries

38. The bicuspid valve is known as the:

- A) Pulmonary semilunar valve
- B) Mitral valve
- C) Tricuspid valve
- D) Aortic semilunar valve

39. Blood travels to the stomach by way of the branch of the celiac trunk called the:

- A) Superior mesenteric artery
- B) Inferior mesenteric artery
- C) Gastric artery
- D) Common hepatic artery

40. Which one of the following is the middle section of the small intestine:

- A) Ileum
- B) Jejunum
- C) Duodenum
- D) Ascending colon

	Answer		Answer		Answer		Answer		Answer
1-		9-		17-		25-		33-	
2-		10-		18-		26-		34-	
3-		11-		19-		27-		35-	
4-		12-		20-		28-		36-	
5-		13-		21-		29-		37-	
6-		14-		22-		30-		38-	
7-		15-		23-		31-		39-	
8-		16-		24-		32-		40-	

QUESTION IV SHORT ANSWER

1. Please Enumerate Cranial nerves:

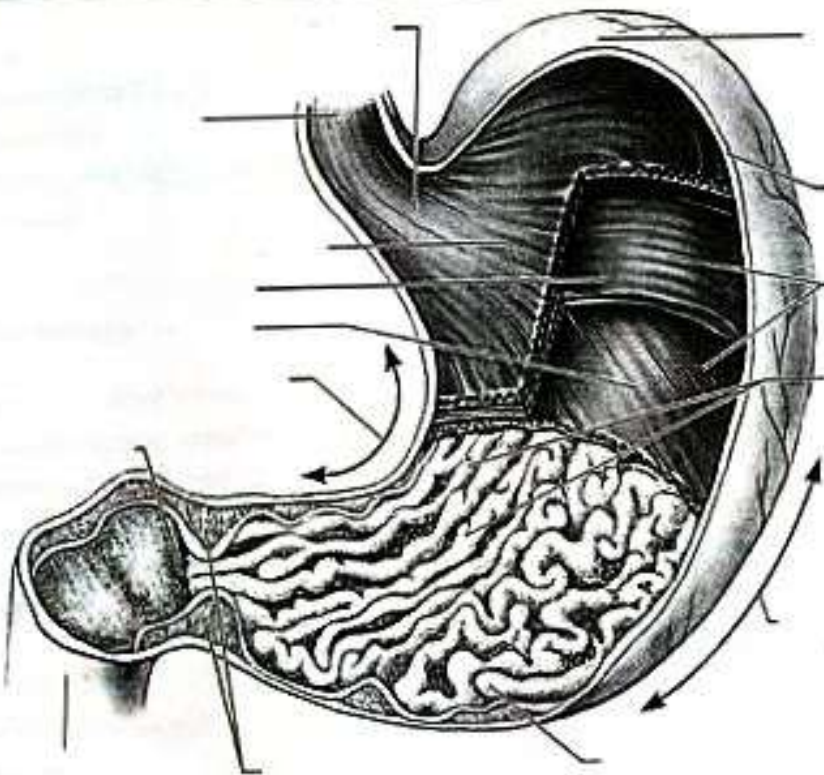
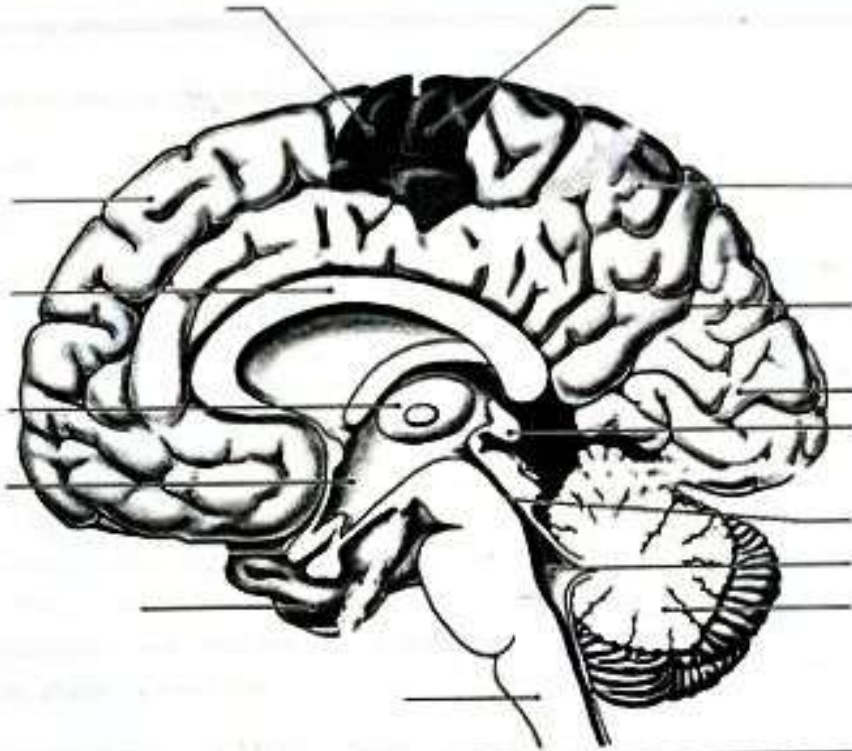
1	
2	
3	
4	
5	
6	
7	
8	
9	
10	
11	
12	

2. Please Enumerate Branches of the Abdominal Aorta

3. Enumerate conducting system of the heart

4. Describe briefly about Spinal Cord:

QUESTION V COMPLETE THE FOLLOWINGS PICTURES



GOOD-LUCK انتهى الاسئلة