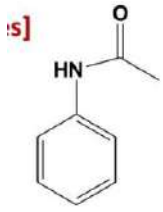
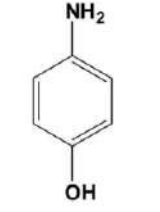


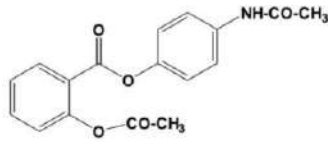
Arachidonic acid



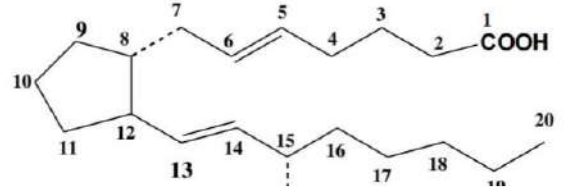
Acetanilide



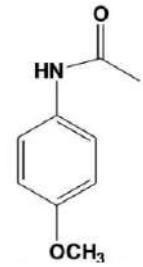
p-Aminophenol



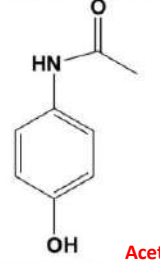
Benorylate



General Structure of Prostaglandins

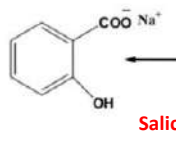


Phenacetin

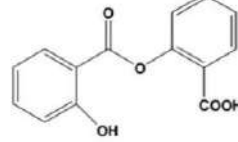


Acetaminophen

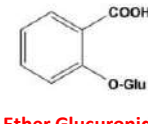
acetamol



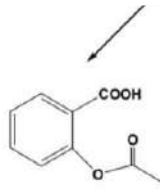
Salicylic acid



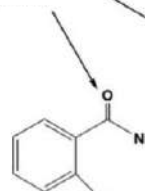
Salsalate



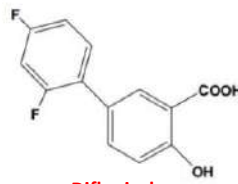
Ether Glucuronide



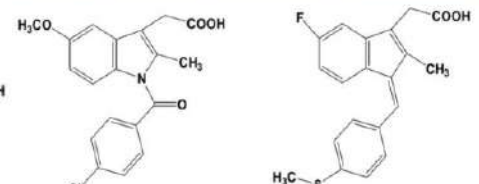
Acetylsalicylic acid [Aspirin]



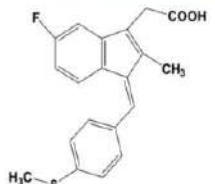
Salicylamide



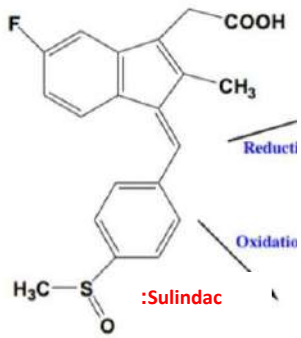
Diflunisal



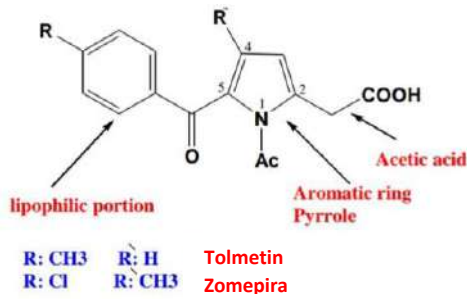
Indomethacin



Sulindac



Sulindac



lipophilic portion

Acetic acid

Aromatic ring

Pyrrole

R: CH₃

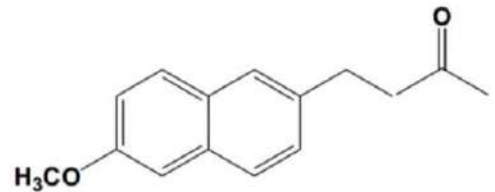
R: H

Tolmetin

R: Cl

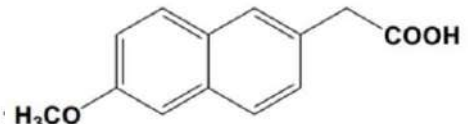
R: CH₃

Zomepirac



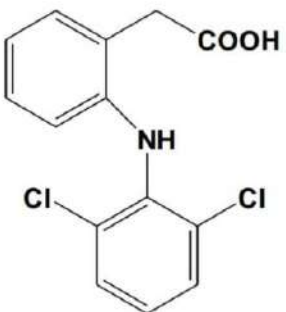
Nabumetone (Prodrug)

Metabolism

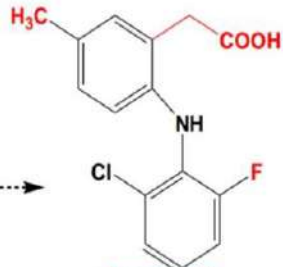


6-Methoxynaphthalene-2-acetic acid (6MNA)

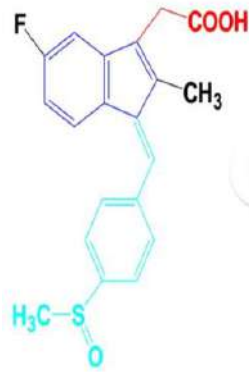
Active metabolite [Metabolite is related to naproxen]



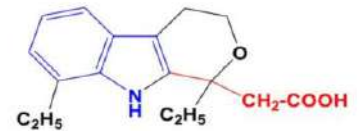
Diclofenac



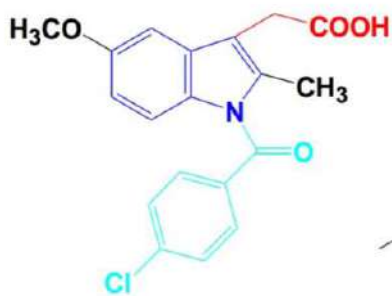
Lumiracoxib



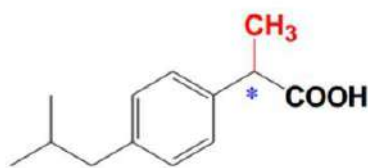
Sulindac



Etodolac Pyranocarboxylic acid



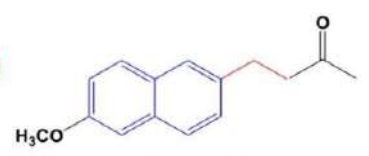
Indomethacin



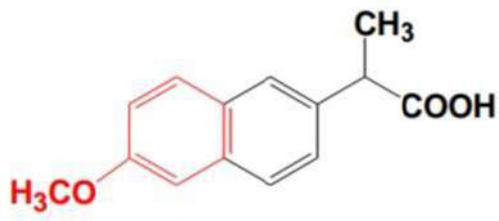
Ibuprofen



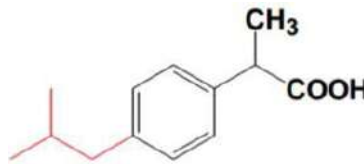
Tolmetin & Zomepirac



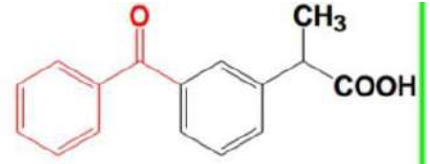
Nabumetone



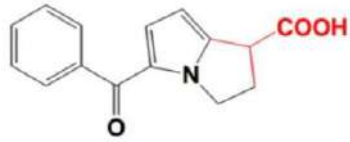
Naproxen



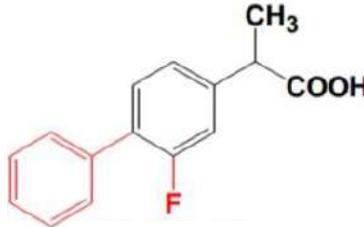
Ibuprofen



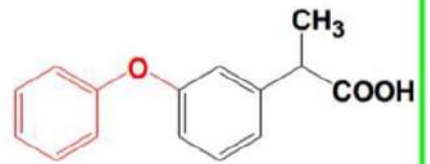
Ketoprofen



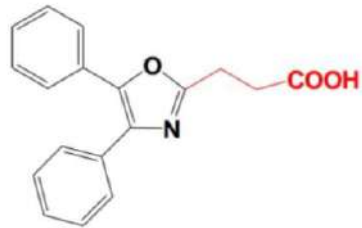
Ketorolac



Flurbiprofen

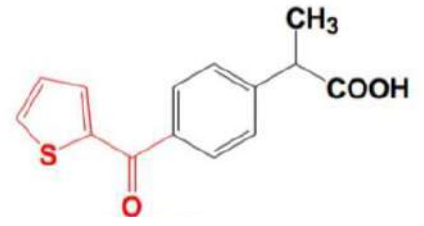


Fenoprofen

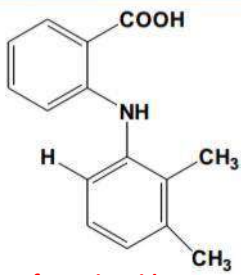


Oxaprozin

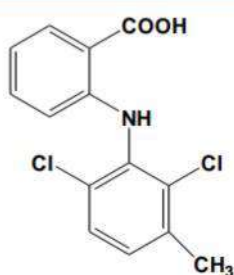
eteroaryl
nic acid



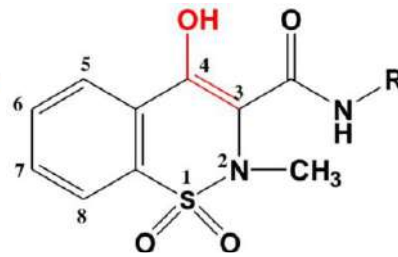
Suprofen



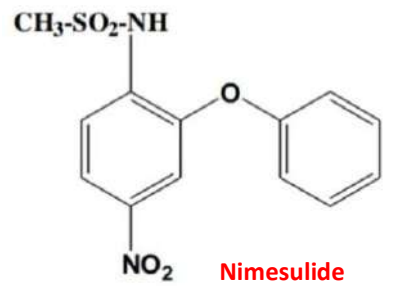
Mefenamic acid



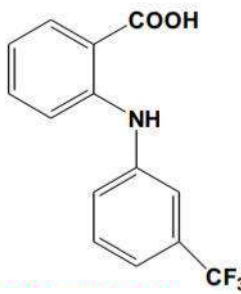
Meclofenamic acid



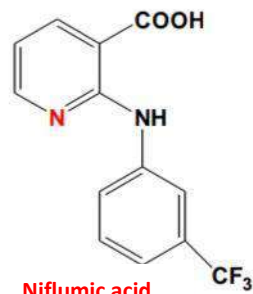
Oxicam



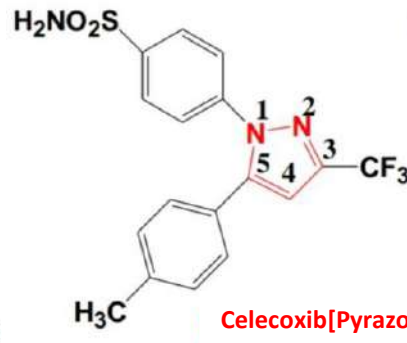
Nimesulide



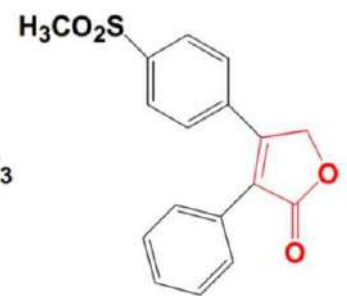
Flufenamic acid



Niflumic acid



Celecoxib [Pyrazole]



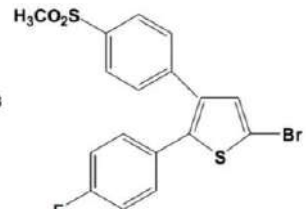
Rofecoxib [Furanone]



Valdecoxib [Oxazole]



Parecoxib



DuP 697

d compound